



# REPORT OF IMPACT ANALYSIS BASED ON THE FEEDBACK FROM STAKEHOLDERS (2022-23)

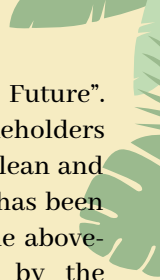
## MISSION LIFE



# INTRODUCTION

The Centre for Internal Quality Assurance (CIQA) of Indira Gandhi National Open University (IGNOU) developed feedback tools for data collection for the academic year 2022-2023 from its stakeholders, namely: Teachers; Subject Experts; Academic Counsellors; Learners; and Alumni. The feedback was obtained keeping the G-20 Agenda of the Government of India in mind. India sees its G20 presidency as a catalyst of change and global transformation that will have impact on the educational processes of the University system. The UGC has prepared 'G20- A Primer-Background Note Prepared for G20 University Connect' for fast-tracking Sustainable Development Goals (SDGs) and leading the HEIs and its stakeholders to adopt eco-friendly sustainable lifestyles through LiFE (Life for Environment) as major priority today.

Against this backdrop, the feedback tools were prepared so as to obtain stakeholders' views on the issues flagged above. One of the major objectives of obtaining feedback from stakeholders was to identify gaps and initiate the steps to be taken by the University for the attainment of SDGs by adopting eco-friendly practices through LiFE and replace the prevalent 'use-and-dispose' economy with a circular economy, characterized by responsible consumption, under the



motto: “One Earth, One Family, One Future”. Suggestions were received from all the stakeholders regarding how to make the IGNOU Campus Clean and Green. A report on the “Action To Be Taken” has been compiled based on the views expressed by the above-mentioned stakeholders for consideration by the University authorities and its systematic implementation in the future.

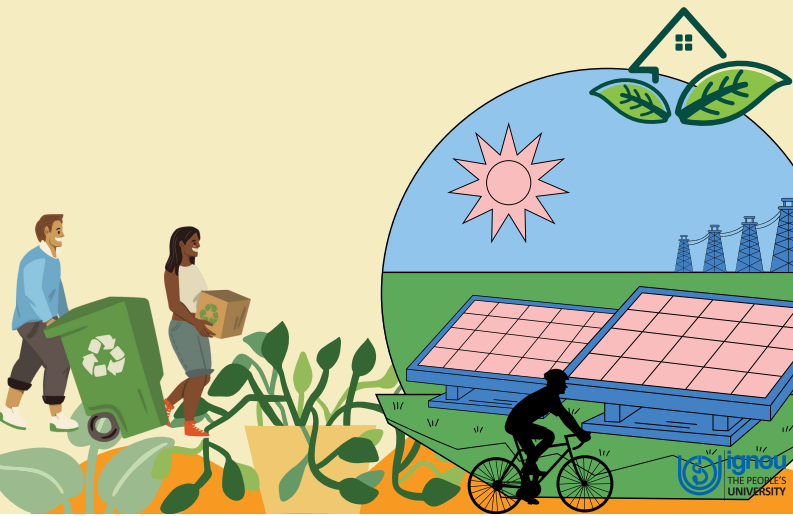
The Feedback Analysis Report of the Teachers’ was approved in the 60th meeting of the Academic Council’s Standing Committee (Item No.15) and Reports of the Academic Counsellors’ and Learners’ in the 80th meeting of the Academic Council (Item No. 18). The Feedback Analysis Reports of the Subject Experts were approved in the respective School Boards by the Schools of Studies namely School of Health Sciences (Item No. 76.13); School of Continuing Education (Item No. 66.39); and School of Translation Studies and Training (Item No.39.2). All of these reports are based on the G-20 Agenda of the Government of India and have been approved by the University’s statutory bodies.



# SUGGESTIONS OF THE STAKEHOLDERS FOR A CLEAN AND GREEN CAMPUS

Suggestions have been compiled from the above-mentioned reports and further segregated into three sections namely:

- 1) Action to be taken by Administration Division;
- 2) Action to be taken by Horticulture Cell; and
- 3) Action to be taken by Campus Maintenance Division.



# FEEDBACK TO ADMINISTRATION DIVISION

- Conduct sensitization programmes to reduce the culture of 'use and dispose'.
- Use reusable bags, bottles, and containers, and avoid disposable items whenever possible.
- Reduce plastic usage in the campus and ban use of single plastics completely.
- Organize health awareness talks.
- Observe clean days and schedule cleanliness drives by involving all employees for at least one day in a month for campus clean and green activity. Each staff can give "Shram Daan" such as: weeding the garden, watering the plants, picking up the waste , etc.
- Increase awareness and cooperation of employees for maintaining clean washrooms.
- Blue and Green Garbage bins to be provided at designated places on the campus for disposal of dry and wet waste (recyclable and non-recyclable waste).
- Encourage sustainable transportation in the campus by introducing e-rickshaw and cycles for internal mobility.
- Collaborate with NGOs to recycle paper, plastic, and e-waste materials of the University.
- Encourage paperless transactions in the office by focusing on the efile system. Issuance of circulars/ notices/ handouts via emails and hosted on the website only.

# FEEDBACK TO HORTICULTURE CELL

- Plant more and more trees which will help in controlling climate change.
- Drip-irrigation should be used in watering the campus plants/trees and more trees should be planted, which are less water-intensive but are of high economic value.
- Excess water flow from all the ROs can be drained into reuse of the water in cleaning and watering the trees.
- Wet waste can be collected from the residential complex and used for the production of manure for the various gardens of the University.
- Every School can adopt a garden as a rose garden, herb garden etc. and maintain it as environmental activity. The best-maintained garden by School may be given an award or appreciation certificate on the foundation day of the University.
- All the employees should own at least one plant from the existing plants and take care of them. Plantation should be made a regular practice.
- Develop available spaces to grow medicinal herbs and oriental plants and generate income through sale of these and encourage their usage by the employees.

# FEEDBACK TO CONSTRUCTION & MAINTENANCE DIVISION

- The use of green energy should be encouraged. The entire IGNOU campus can be powered by solar panels in both its offices and its residential complex. Extra electricity generated should be sold to the government and revenue should be generated.
- IGNOU should create awareness and run projects on clean and green energy for surrounding areas as part of its extension activity. Once successful, the same efforts should be replicated by all Regional Centres for a more significant impact.
- Ways should be found out to make the old structures more eco-friendly, like using sustainable materials for interiors etc. The new structures should be constructed in a strictly eco-friendly manner. The material should be such that it keeps the building less heated in the summer and warm in the winter.
- Replacing of all taps and flush systems in the toilets with sensor taps and auto flush systems for all restrooms and pantries should be initiated to replace the old rusted leaking sanitary fittings.
- Using LED bulbs is not the only option; sensors should also be used on all campus lighting.
- Preference should be given to build multi-storey buildings in place of single/double-storey buildings, in order to make more space for plantation.
- Issue advisories on Energy conservation to the employees of the University.



## COMPILATION & DESIGN

- *Prof. Manjulika Srivastava, CIQA*
- *Dr. Shekhar Suman, CIQA*
- *Dr. Navita Abrol, CIQA*



Indira Gandhi National Open University  
Maidan Garhi, New Delhi - 110068  
web: [www.ignou.ac.in](http://www.ignou.ac.in)  
<https://www.facebook.com/OfficialPageIGNOU/>  
<https://twitter.com/OfficialIGNOU>

